

NATSUME RAT

New



Together with the Future of Life Science

“The concept of 3Rs^{*}” proposed by Russell and Burch in 1959 is currently the international principle on performing animal experiments, and this is an essential principle to follow in the life sciences.

*1Replacement, Reduction, and Refinement

Natsume developed and now launch the Natsume Rat, a silicon mannequin for training animal experimental techniques, taking account of how to address the principle of the 3Rs as a manufacturer of animal experiment devices.

We hope to contribute to a reduction in the number of experimental animals used, and Natsume Rat is used by those concerned as much as possible as practical efforts for

the education for sophisticating animal experiment techniques.

KN-590

Rat model for training the animal experimental technique

NATSUME RAT

Specification

| | |
|----------------|-------------|
| Length of body | 190mm (7½") |
| Length of tail | 180mm (7") |
| Sex | Male |
| Body weight | about 200 g |
| Material | Urethane |

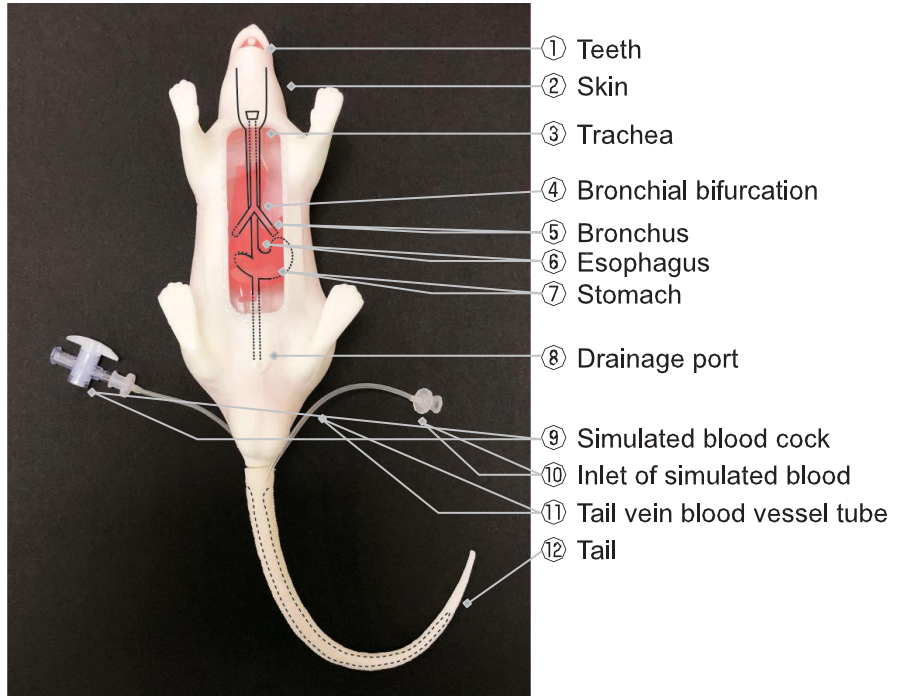
Component parts

| | |
|------------------------|-----|
| Main Body of rat model | × 1 |
| Tail | × 2 |
| Instruction manual | × 1 |

Related Products (optional)

| | |
|-------------------------|-----|
| Simulated blood (50 ml) | × 1 |
| Spare tail | × 1 |

Structure



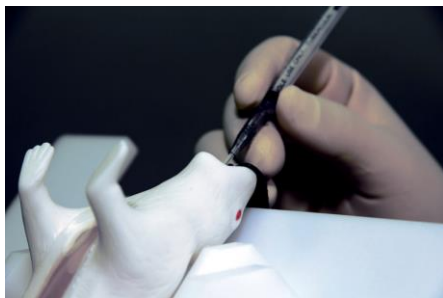
Trainable procedures



Retention / Holding



Oral administration



Endotracheal intubation



Tail vein injection
Blood collection through tail vein

- Please, treat Natsume Rat carefully like a living body. Unnatural handling may cause damage. Refer to the instruction manual for the precautions.
- Please, be aware that the appearance and specifications may change for product improvement without a preliminary announcement.